



# *Medical Access Coalition*

*Serving Delta & Menominee Counties*

---

# 2006 Annual Report

## Our Mission

*Our mission is to foster, facilitate, and coordinate access to affordable quality medical care for residents of Delta & Menominee counties.*

### 2006 Board of Directors

Paddy Fitch	President
Jim Wayne	Vice President
Amy Johnson	Treasurer
Kim Johnson	Secretary
Nancy Beck	Board Member
Mary Bradley	Board Member
Thomas Butch	Board Member
Marilyn Casey	Board Member
Donald Fitch	Board Member
Valerie Hallam	Board Member
Cindy Johnson	Board Member
Karen Lancour	Board Member
Tom Mack	Board Member
Cathy Mercier	Board Member
Gary Moore	Board Member
John Petrasky	Board Member
Candy Sheridan	Board Member
Laura Woodworth	Board Member

February 19, 2007

The year 2006 will be remembered for the many “firsts” experienced by the Medical Access Coalition: the opening of offices in Escanaba and Menominee, establishing referral and coordination procedures with many local healthcare providers and agencies, and enrolling our first clients. What began as a small group of people meeting at a local church with the goal of helping their neighbors without health insurance has developed into an organized program offering access to desperately needed prescription drugs, and information and referral for other healthcare services. Over 200 people in Delta and Menominee counties received these services during 2006. The comments recorded on Page 11 express their appreciation for the efforts undertaken on their behalf.

The services provided by the Medical Access Coalition benefit the entire community as well as the people who are directly served. By connecting people to existing government programs, i.e. Medicaid, Adult Medical Program, and Public Health, better coordination of local health care resources, and increased access to prescription drugs; more community residents are able to maintain their health and prevent more costly emergency care. Healthier people contribute to a healthier community.

The Medical Access Coalition of Delta & Menominee Counties is a member of the Upper Peninsula Health Access Coalition, a partnership of five local access coalitions serving all 15 counties in the Upper Peninsula. As partners, we share common goals, eligibility criteria and enrollment procedures. We benefit from this regional partnership through grant funding secured for the UP, a shared patient data system, and innovative ideas and technical assistance provided by the coalitions.

These accomplishments would not have been possible without the support of the community partners listed on Page 13. Many people contributed their time and professional talents to serving on the Board of Directors and/or providing input in the development of a pharmacy benefit and establishing efficient enrollment procedures. The investment in access to affordable healthcare for low income, uninsured residents is a tribute to the spirit of caring for each other which exists in our two counties. We are proud to be a part of this community effort and look forward in 2007 to increasing the number of people served and listening carefully to their input as we plan for the future.

Sincerely,

Barb Chenier  
Program Director

## Office & Staff

Delta County  
2920 College Avenue  
Escanaba, MI 49829  
PH: (906) 789-1627  
Fax: (906) 789-8145

Menominee County  
1110 Tenth Avenue  
Menominee, MI 49858  
PH: (906) 863-4051  
Fax: (906) 863-7997

### Staff

Barb Chenier, Program Director

Delta County:

Mary Williams, Assistant Program Coordinator

Tami Dowd, A\*VISTA, Office Systems &  
Enrollment Coordinator

Menominee County:

Becky Spaude, Assistant Program Coordinator

# 2006 Milestones

## January 2006

Menominee County joined with Medical Access Coalition of Delta County (MACDC)

Three Menominee Representatives named to the MACDC Board—Mary Bradley, Tom Mack, and Cindy Johnson

## February 2006

Contracts signed with Ingham County Health Department and Pharmacare to provide pharmacy benefit

## March 2006

Delta County office opened for business

Director & Board Representative participated in Upper Peninsula Health Access Coalition (UPHAC) Strategic Planning Session

## April 2006

MACDC hosted the UPHAC Mid-Year Conference at Bay College

## May 2006

Nancy Beck named MACDC representative to UPHAC Board

Presentation given at the Aging Conference at Bay College

Delta County enrolled 50<sup>th</sup> client

## August 2006

Menominee office space secured and coordinator hired

Delta County enrolled 100<sup>th</sup> client

## September 2006

Candy Sheridan, new Twin Counties Free Clinic Director, named to MACDC Board

## October 2006

Menominee County office opened for business

Menominee community members named to MACDC Board—Valerie Hallam and Gary Moore

## November 2006

MACDC enrolled 150<sup>th</sup> client

Board members and staff attended UPHAC Annual Conference in Escanaba & assisted UPHAC with host duties

## December 2006

MACDC received notice of 501(c)(3) application approval

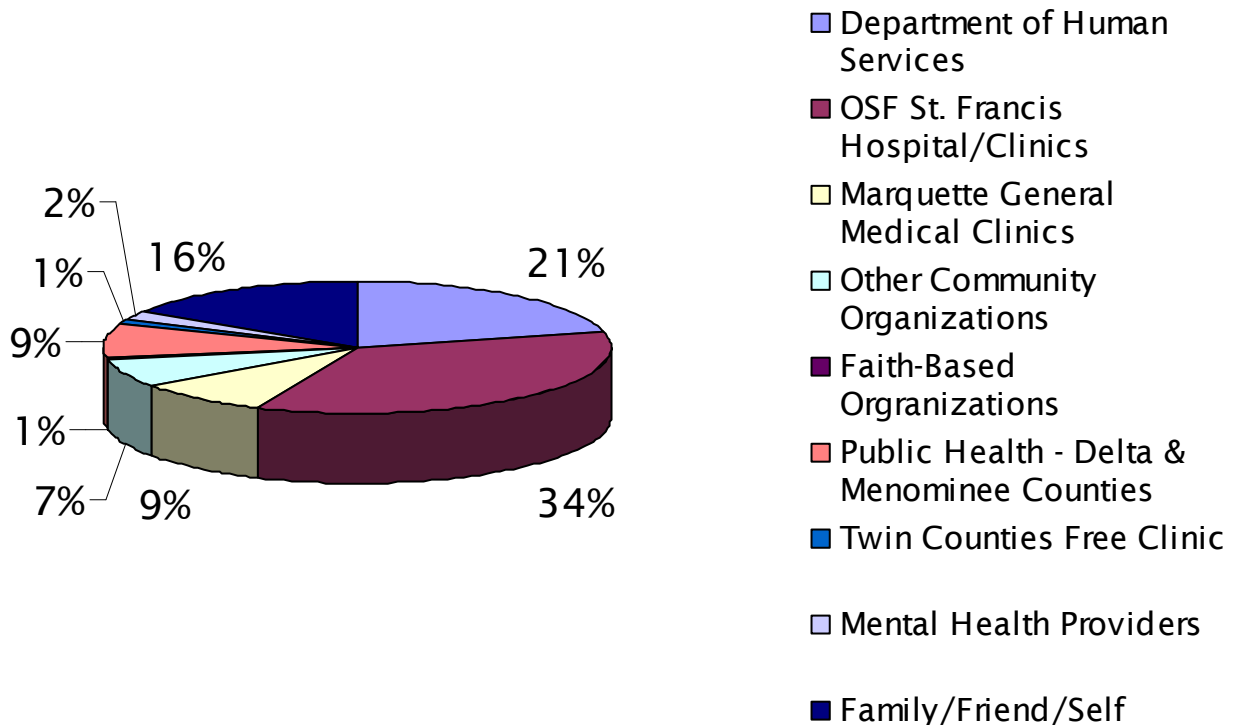
Agreement with Public Health, Delta & Menominee Counties renewed

# Enrollment Activity

Enrollments are completed by appointment only. All applicants are screened for eligibility prior to an enrollment appointment being scheduled.

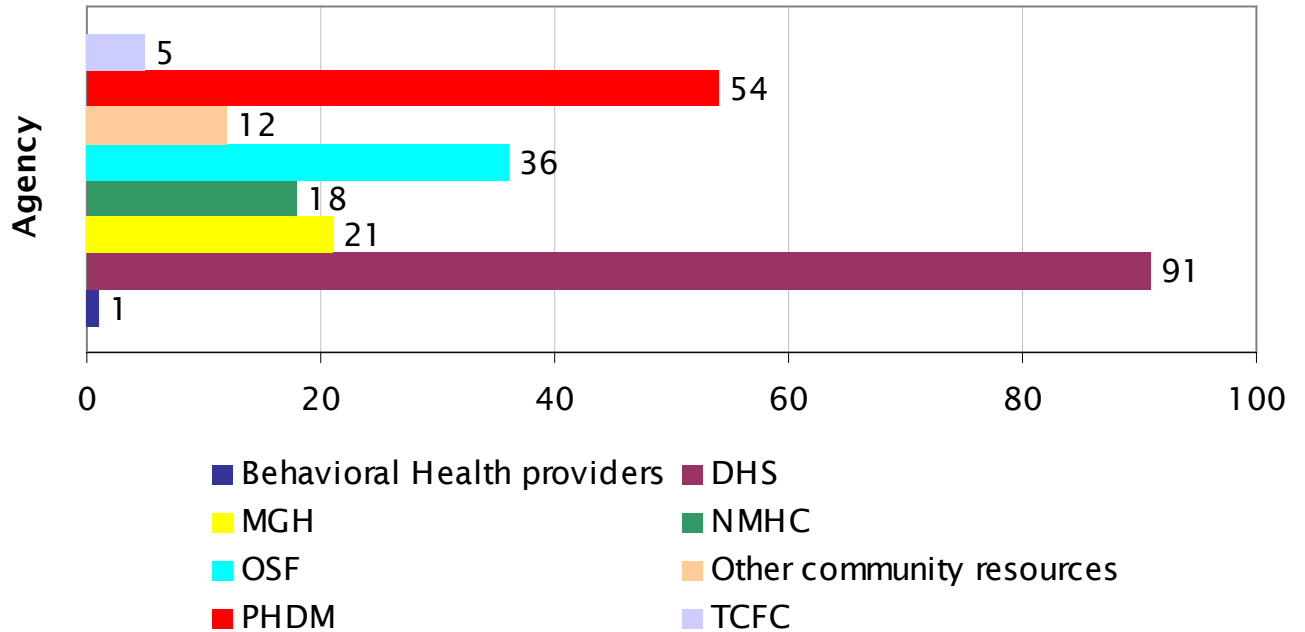
	Total
Total Active Enrollments as of December 31, 2006	133
Transferred/Discharged:	
Enrolled in AMP / Medicaid	30
Obtained other Insurance	2
Eligible for Medicare	2
Client Request	1
Noncompliance	18
Other circumstances	1
<b>Total patients enrolled 03/01/2006 to 12/31/2006</b>	<b>187</b>
Assisted Prior to Enrollment	39
<b>Total served 03/01/2006 to 12/31/2006</b>	<b>226</b>
Screened but not eligible	167

## REFERRAL SOURCES

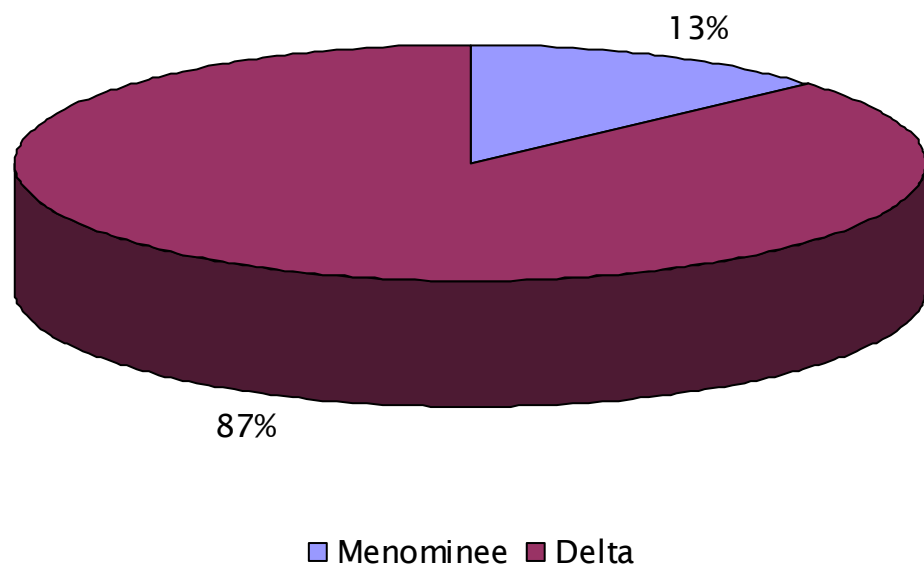


# Enrollment Activity

## Referrals to Outside Agencies



## Patients Enrolled by County of Residence



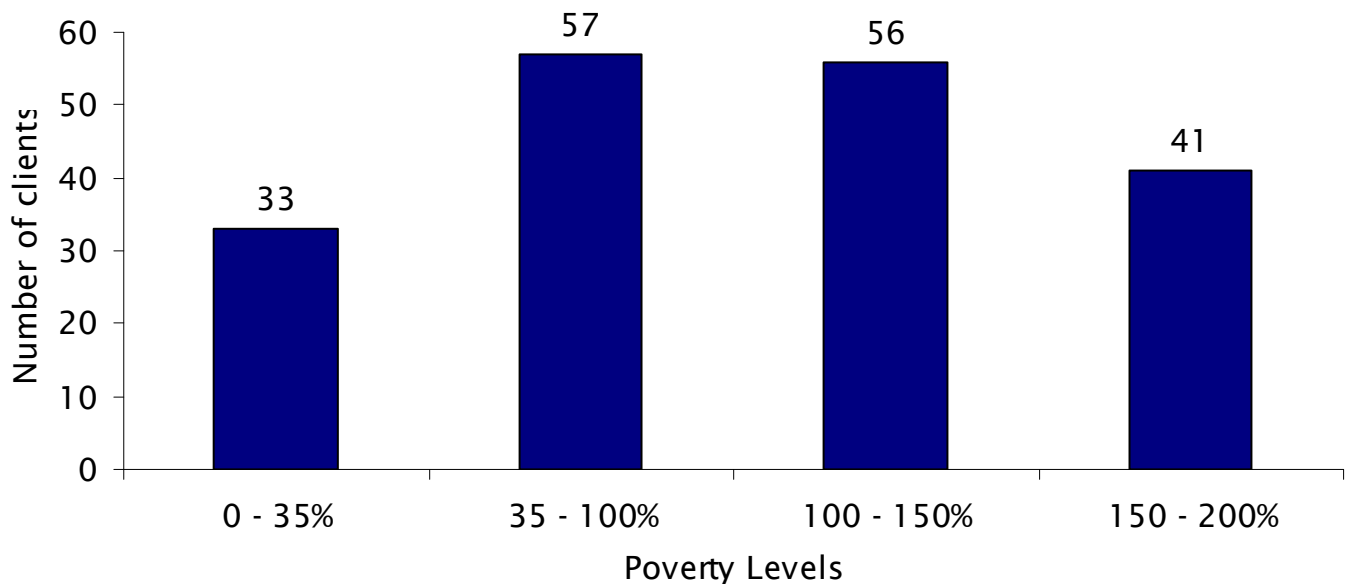
# Client Demographics

The following client demographic information is reported at the time of enrollment.

## Employment Status

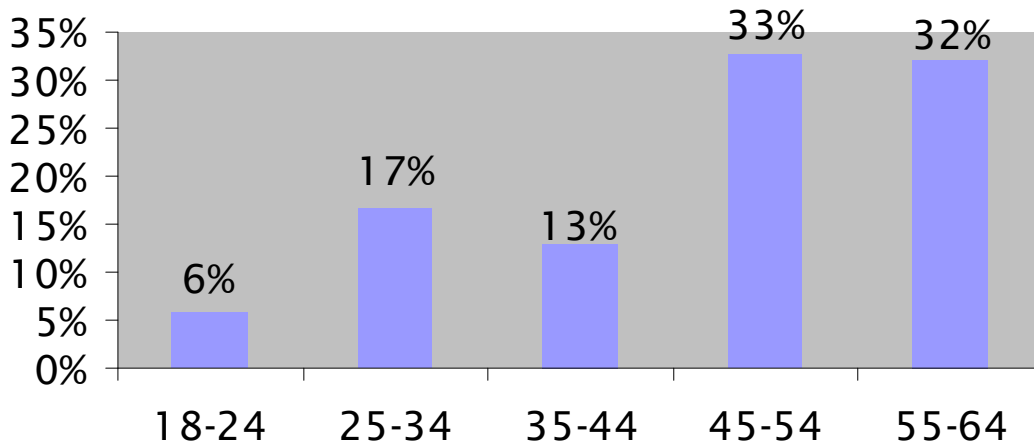


## Client Income Ranges

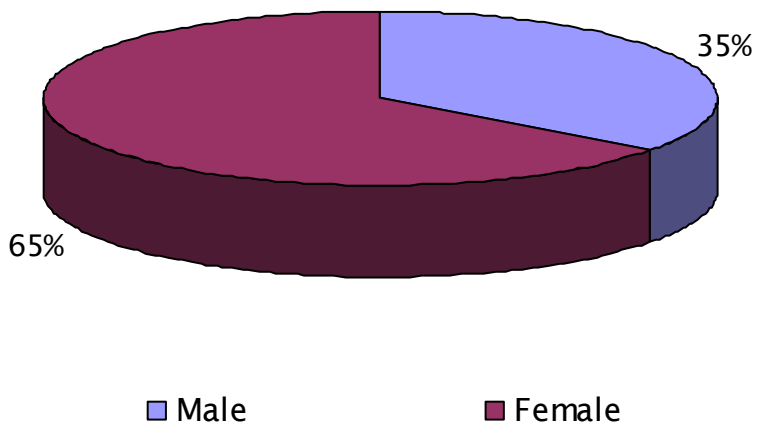


# Client Demographics

## Age

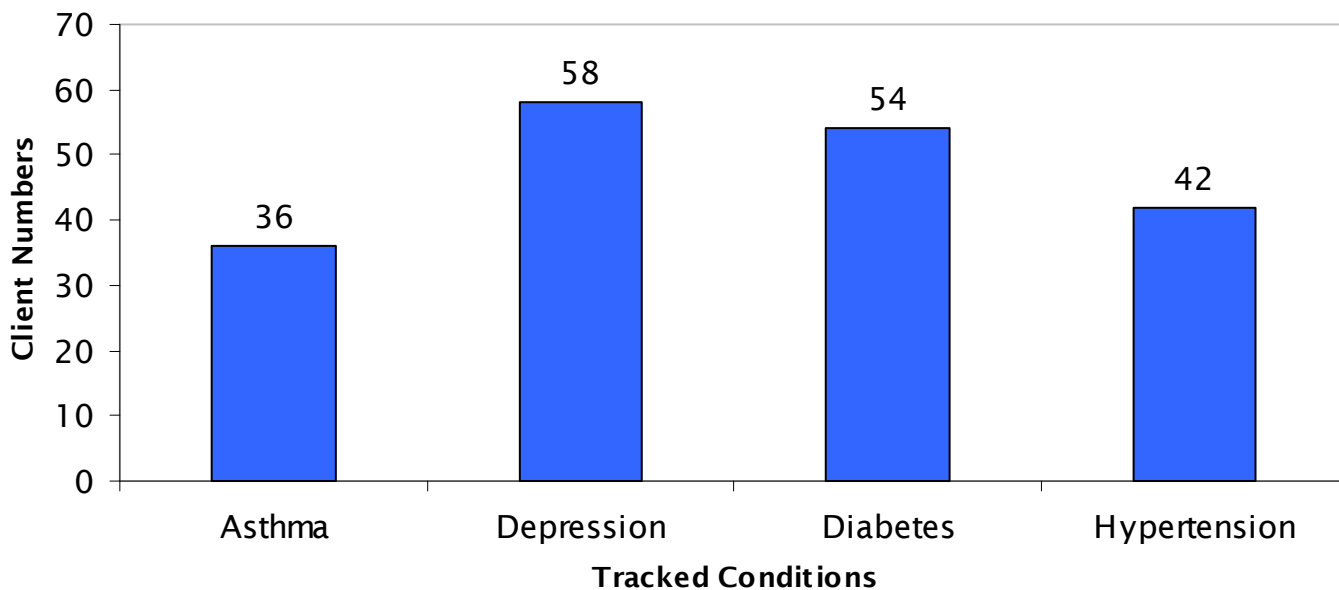


## Gender

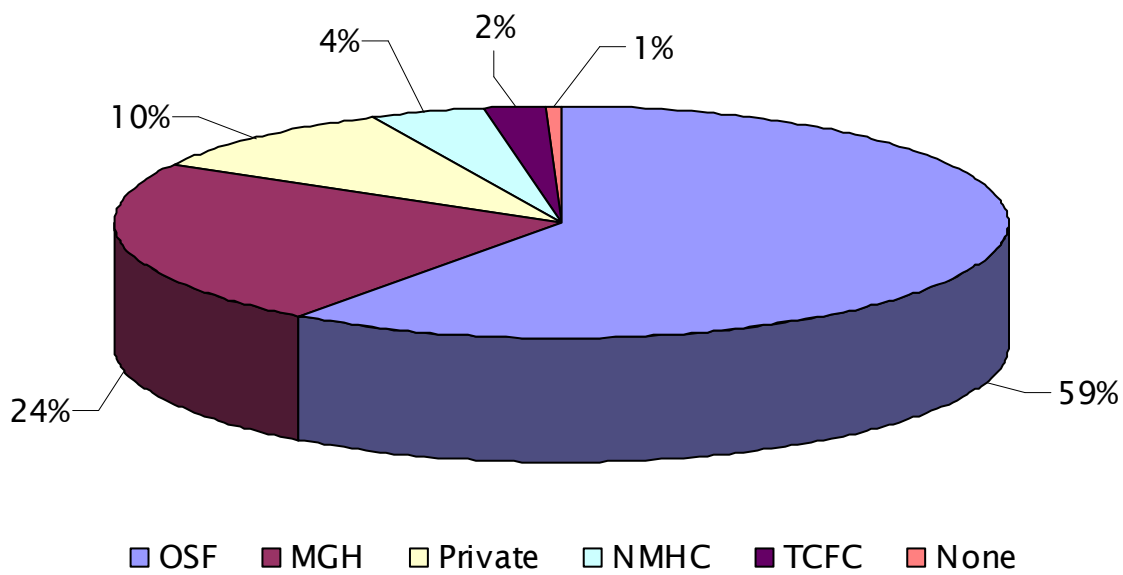


# Client Demographics

## Tracked Conditions



## Client Primary Physician



# Six Month Survey Results

All clients are asked to respond to a survey and update their enrollment information.

The results of 41 responses received are as follows;

1) How would you rate the ease of getting your medications with the pharmacy card?

Excellent - 29    Good - 6    Average - 2    Fair - 0    Poor - 0  
N/A (I didn't use the Pharmacy Card.) - 4

2) How would you rate the ease of getting your medications from a Pharmaceutical company?

Excellent - 21    Good - 4    Average - 4    Fair - 1    Poor - 0  
N/A (I didn't get medications from a Pharmaceutical Company.) - 11

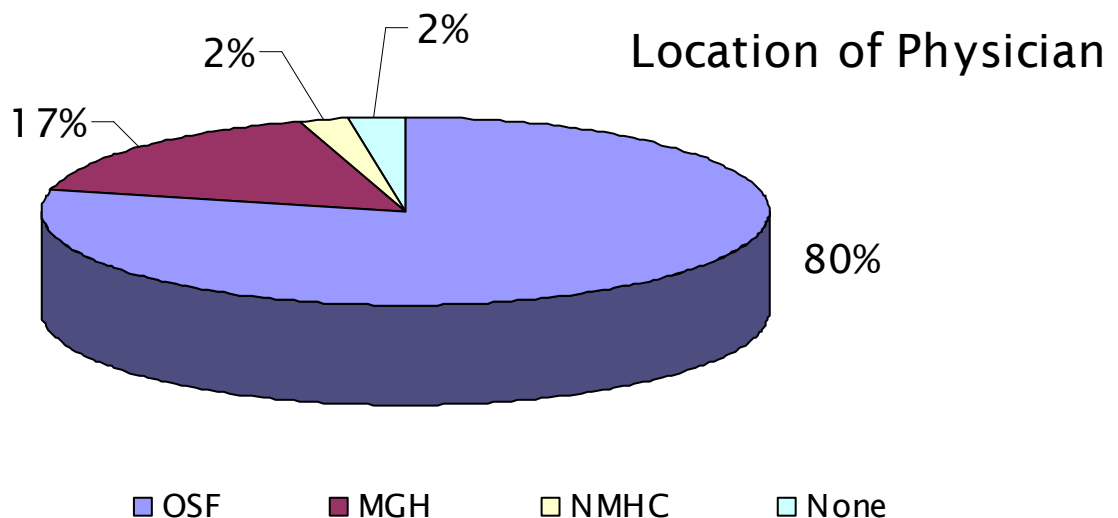
3) How would you rate being able to see your family doctor when needed?

Excellent - 25    Good - 4    Average - 4    Fair - 1    Poor - 1  
N/A (I didn't require medical care.) - 5    No Answer - 1

4) How would you rate your overall experience in the Medical Access Program?

Excellent - 37    Good - 3    Average - 1    Fair - 0    Poor - 0

5) Where is your physician located:



## 6 Month Survey Continued:

### Survey client comments

“Smiles & Friendly service.”

“There’s some meds not covered by the card.”

“I think this program is wonderful. It’s great for divorced women with no medical insurance. Thank you for helping me.”

“Thank you very much for all your help it is a wonderful program.”

“The card don’t always cover for appointed Dr.”

“The program has helped us very much. We wouldn’t have been able to do the thing it has on our own. Thanks to the MACDC and Mary Williams!”

“Need dental, eye glasses and exam and need to take plavix for heart.”

“Heart doctors told me I need to fix my teeth! It would help my heart and health. Dentures not covered at dentist (payments)”

“Wonderful—so helpful.”

“Eye glasses but we are very appreciative for everything else.”

“The ladies in the office try very hard to help you. God Bless them.”

“This prescription is \$400.00 a month and I would have never been able to afford it.”

“Very good thank you.”

“How can they (Pharmaceutical Companies) go with last year tax records that was last year not now.”

“Great, thank you!”

# Top 10 Drugs Covered

By MAC generic drug card:

GENERIC NAME	(BRAND NAME)	USAGE
lisinopril	(Zestril)	hypertension
fluoxetine	(Prozac)	depression
metformin hcl	(Glucophage)	diabetes
metoprolol	(Lopressor)	hypertension
levothyroxine	(Synthroid)	hypothyroidism
albuterol	(Ventolin)	asthma
atenolol	(Tenormin)	hypertension
glyburide	(Diabeta)	diabetes
diltiazem	(Cardizem)	hypertension
allopurinol	(Zyloprim)	gout

By Pharmaceutical company Patient Assistance Programs (PAPs):

BRAND NAME	(GENERIC NAME)	USAGE
Prilosec	(omeprazole)	stomach acid
Nexium	(esomeprazole magnesium)	stomach acid
Plavix	(clopidogrel)	angina
Advair	(fluticasone with salmeterol)	asthma
Effexor	(venlafaxine hcl)	anxiety
Lantus	(insulin glargine)	diabetes
Vytorin	(simvastatin)	cholesterol
Zoloft	(sertraline)	depression
Crestor	(rosuvastatin)	cholesterol
Cymbalta	(duloxetine)	depression

The value of prescription drugs provided to clients in 2006:

Generic drug card:	\$14,081.08
Pharmaceutical company PAP:	<u>\$119,362.33</u>
Total:	\$133,443.41

## Community Partners

OSF St. Francis Hospital & Medical Clinics  
Marquette General Hospital & Medical Clinics  
Northern Menominee Health Centers  
Twin Counties Free Clinic  
Bay Area Medical Center  
Delta & Menominee Department of Human Services  
Public Health—Delta & Menominee Counties  
Salvation Army  
St. Vincent de Paul  
Pathways to Healthy Living  
Butch, Quinn, Law Offices  
Amy Johnson, CPA  
MDS Community Action Agency  
St. Stephen's Episcopal Church  
Northpointe Behavioral Healthcare Systems  
Menominee Medical Clinic  
Marinette Menominee Clinics  
Northreach Internal Medicine  
UP Cardiology Associates  
Participating Pharmacies:  
Elmer's County Market Pharmacy  
Gladstone Pharmacy, Inc.  
K-Mart Pharmacy  
Medicine Shoppe  
Shopko Pharmacy  
People's Drug Store  
Walgreen's Pharmacy  
Wal-Mart Pharmacy  
CVS Pharmacy